

The background of the entire page is a photograph of a winter landscape. It shows a snow-covered path leading through a field of snow-laden trees. The sky is a pale blue with some light clouds. The overall tone is bright and serene.

Adult Learning Systems- Lower Michigan Newsletter

1st Quarter October-December 2023

8170 Jackson Rd
Ann Arbor, MI 48103
734-408-0112

In This Issue...

CEO's Corner

CARF 2024

Awards

New paid holiday's

Holiday Fun

Around ALS-LM

CEO'S Corner

We had a great time around ALS-LM during the holiday season. Our homes were filled with laughter and joy. We took this time to appreciate all our staff with an appreciation box and celebrated through meetings and other fun activities. Thanks to everyone who makes ALS-LM such a great success.

Sherri

CARF 2024

Our CARF survey is scheduled for April 24-26, 2024.

During these 3 days, we'll have 3 CARF surveyors reviewing our policies and procedures, touring our homes, and interviewing our supervisors, staff, family, and consumers. We're excited to tell our ALS-LM story to the CARF surveyors and demonstrate our conformance to national accreditation standards.

AND TO BE FULLY INTE



New Main Office Staff

ALS-LM is pleased to introduce Kari Moyle as our new HR Recruiter!

DCW & Manager of the Quarter Winner's

We want to take a moment to congratulate our dedicated direct care workers who were nominated for their hard work this quarter!

As a fairly new employee Marcelles has completed all ALS-LM and county trainings with no problems or assistance needed before the due dates. From day one he has built a good relationship with all the consumers at the Crystal Home. He interacts with them and is eager to learn.



Marcelles Broden
Direct Care Worker
Crystal



Iman Reeves
Direct Care Worker
Romeo Plank

Iman has a wonderful attitude and repour with our residents. She is always willing to stay over or come in on days off in the event of a call in or staffing emergency. She goes above and beyond to assist her co-workers trying to make things as simple as possible for them. Iman is always on time and does not call off. She is always there for our residents, staff, and ALS-LM.

Kim Bates
Manager
Norton

Kim has been with ALS-LM for over 20 years, and is s a very dedicated supervisor to the consumers at Norton. She works alongside her staff, listens to them, and doesn't ask them to do anything she wouldn't do. She's worked all shifts to include overtime to ensure site and consumer needs are met at all times. I could go on and on, Kim is truly an asset to ALS-LM and the consumers ALS-LM serves.



Craig Vowels
Direct Care Worker
Cherrywood

The Tim Lacey Achievement Award recognizes the outstanding direct care professional of the year. The recipient of the 2023 award was Craig Vowels!



The Manager of the Year Award recognizes the outstanding manager throughout the year. The 2023 award went to Jeanette Woods!



Jeanette Woods
Manager
Jewell Pointe

Home Upgrades !



Jamestown's new countertops, cupboards, and appliances



Vivian's new site van



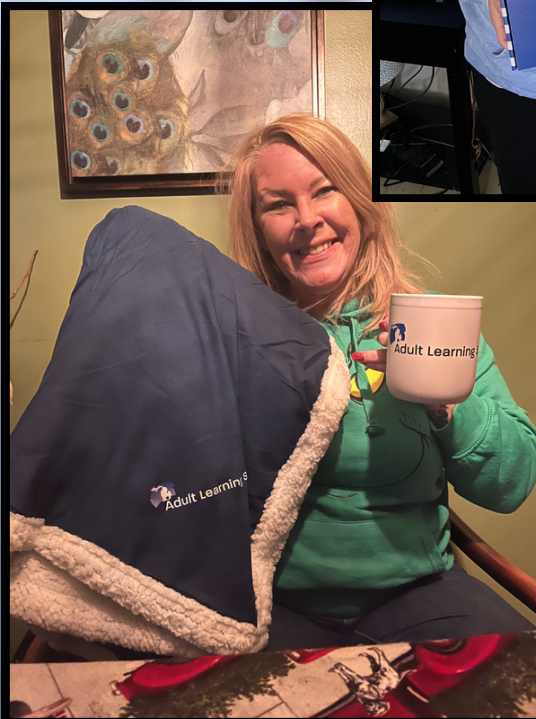
Meadowlane's new kitchen

Trombley's new living room furniture



Staff Appreciation Boxes

In December our office staff delivered staff appreciation boxes to each home! Each box came with a blanket, bluetooth speaker, and a coffee cup.

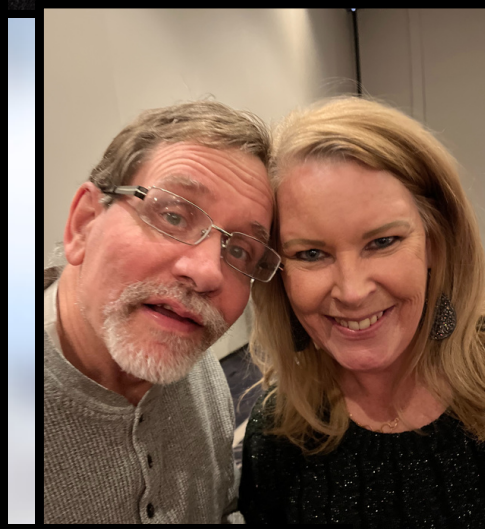


Staff Appreciation Boxes Cont'd



♥ Consumer's Valentine's Day Bash ♥

We brought back our annual holiday party for our consumer's to
enjoy a night out of dinner and dancing!
2/12/24 at the Suburban Collection Showplace in Novi, MI.



Joint Supervisor Holiday Celebration

Joint Supervisor Holiday Celebration held at Weber's Conference Center in Ann Arbor, MI on 12/8/23.



Group photo with everyone holding their canvas paintings

Jeanette Woods
Meadowlane
2023 Compliance Award



Sylvia Jones
Jewell Pointe

2023 Community Integration Award



Melissa McIntosh & Stephanie Wozniak
Briarwood
2023 Community Integration Award



Tina Stevenson
St. Clair
2023 Compliance Award

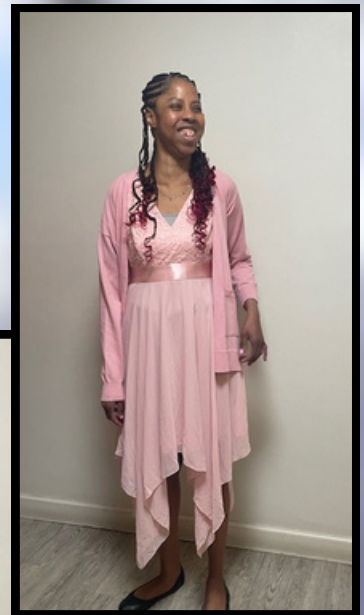


New Paid Holidays !

ALS-LM is pleased to announce the addition of two holidays that will be recognized as PAID holidays effective immediately:

Martin Luther King Day (starting 2025)
President's Day (effective 2024)

Seybold went to prom!



Ham Deliveries

Varsity Ford of Ann Arbor, MI was so kind to donate 16 hams to our homes in Washtenaw County during the holiday season.

Crystal



Cherrywood



Michael's Home



Seybold

Holiday Festivities

Checkout how the homes celebrated the holiday season!

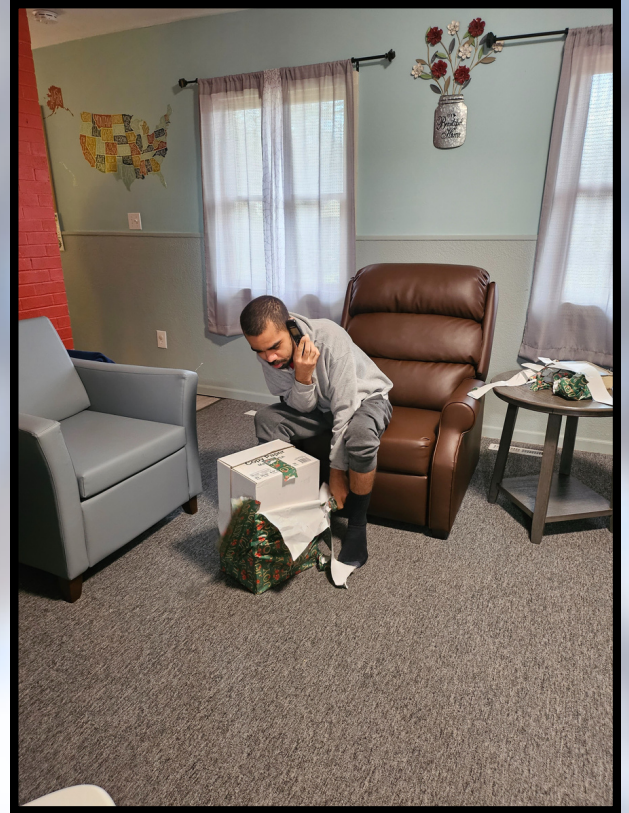


Christmas carolers from the Howell Garden Club visited the Briarwood Home, and brought gifts for all the residents!

Vivian residents received gifts from their payees!



Holiday Festivities Cont'd



Michael's Home on Christmas Day!



Holiday Festivities Cont'd



Norton's Christmas Party

